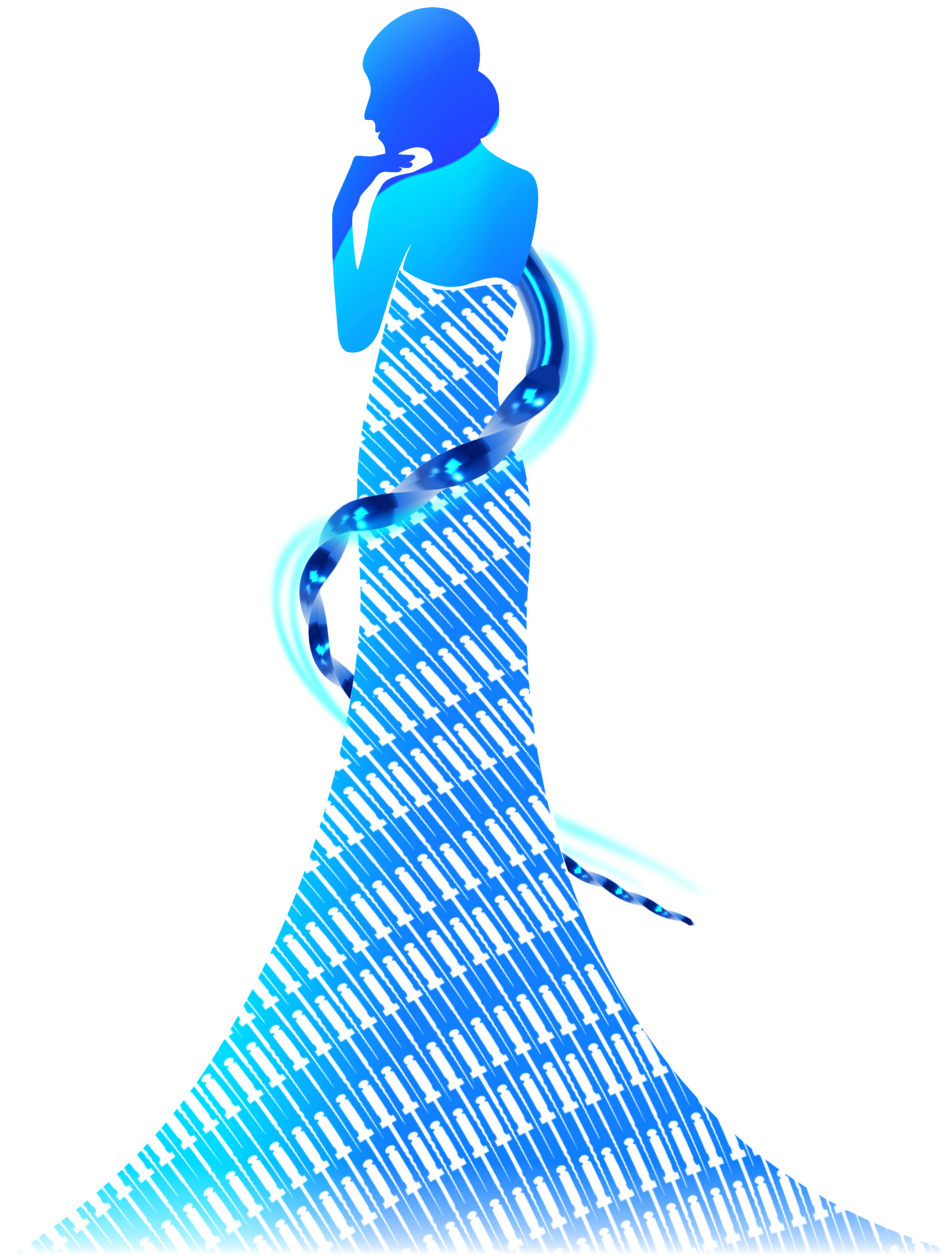




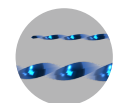
S BLUE II

Regenerative
Heat treatment Files

Considerate for Beginners



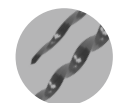
FEATURES



Unique heat treatment technology in Blue Standard







Greater resistance to cyclic fatigue and breakage



Perfect cutting edge reduces inhaled sensation while operating. Scientific apical tips design, automatically follow the curvature of root canal, maintain the natural shape.

Material: NITI ALLOY

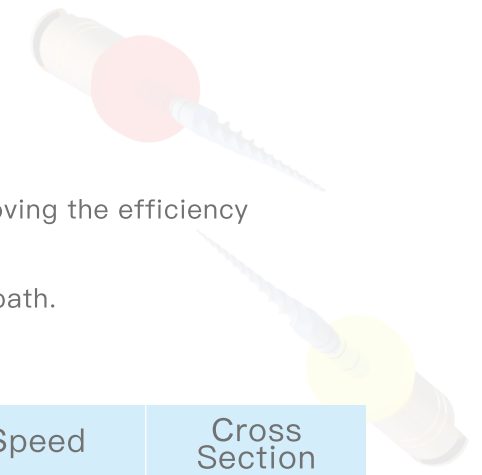
Packing: 4pcs/blister





- STARTER (B0) 17/.10  Pre-bend
- GPS 15/.03  Flexible
- FINISHING (B1) 20/.04  Pre-bend
- FINISHING (B2) 25/.04  Pre-bend

PERFECT Endo.
www.dental-perfect.com

Q: Why we need to choose S-Blue II?

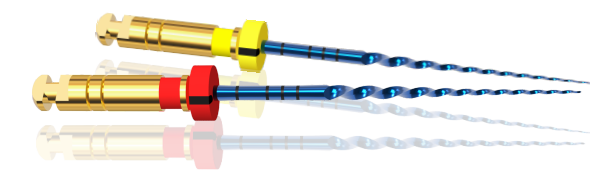
- A:
1. Compared to S-Blue 1st generation, GPS #15/03 is smartly improving the efficiency of glidepath creating.
 2. B2/04 instead of B2/06 for better patency of reproducible glidepath.



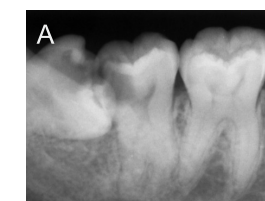
Size	Length	Torque	Taper	Speed	Cross Section
B0 #17	19 (mm)	2.5N/cm	.10	425-500 (rpm)	
GPS #15	21,25,31 (mm)	1.5N/cm	.03	300-350 (rpm)	
B1 #20	21,25,31 (mm)	2.0N/cm	.04	425-500 (rpm)	
B2 #25	21,25,31 (mm)	2.5N/cm	.04	425-500 (rpm)	

PROTOCOL FOR USE

- 1) Create straight-line access to canal orifice.
- 2) With a viscous chelator, passively scout the coronal 2/3 with 10# and 15# hand files. Gently work these instruments until a reproducible glide path is confirmed.
- 3) Use GPS glidepath files to negotiate the root canal Until WL.
- 4) With NaOCl, Irrigate repeatedly, B1 passively follow the glide path. Before light resistance is coming across, laterally brush and remove dentin on the outstroke to improve straight line access and apical progression.
- 5) For larger sizes root canal, B2 is required.



OPERATING CASES



PERFECT Endo.
www.dental-perfect.com